

# SHOWER HEAD



- ✓ Easy Installation
- ✓ Durable
- ✓ Great Water Pressure
- ✓ Adjustable Features



# SHOWER SET



# SHOWER HOSE

360° Anti-twist



PEX Material inside



Ultra cold-proof shower hose 360° swivel, bending at wish with no kink mark

PROTECTION THAT LIVES ON  
**MICROBAN**  
Antimicrobial protection



# CISTERN HOSE AND VALVE



PEX Material inside



# HOSE



# PULL-OUT HOSE



No noise when pull-out

SABIC

Material inside



Nylon braided 100% corrosion resistant

Resistant to 200hrs salt spray test, in prevention of black dot

# FAUCET CONNECTOR



PEX Material inside



Fittings annealed

Stress eliminated by annealing, in prevention of cracking



PEX Material inside

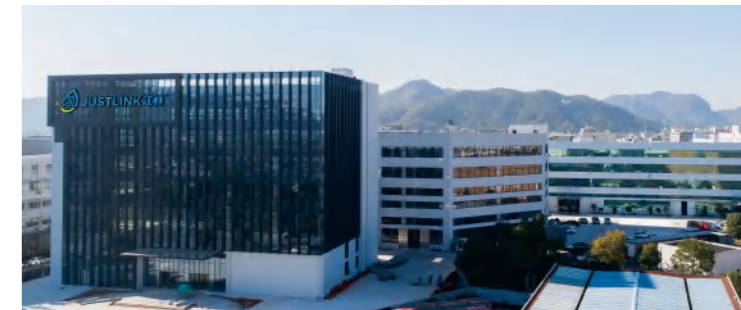


Fittings annealed

Stress eliminated by annealing, in prevention of cracking

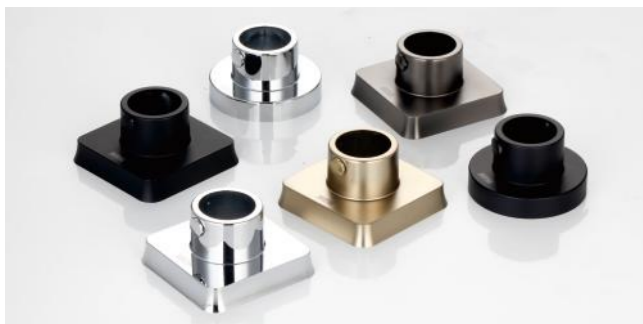


YUHUAN JIANGLIN PLUMBING HOSE & PARTS INC.



JUSTLINK HVAC TECHNOLOGY (THAILAND) CO., LTD.





## FLEXIBLE WATER CONNECTORS



## VALVE



## FLEXIBLE WATER CONNECTOR

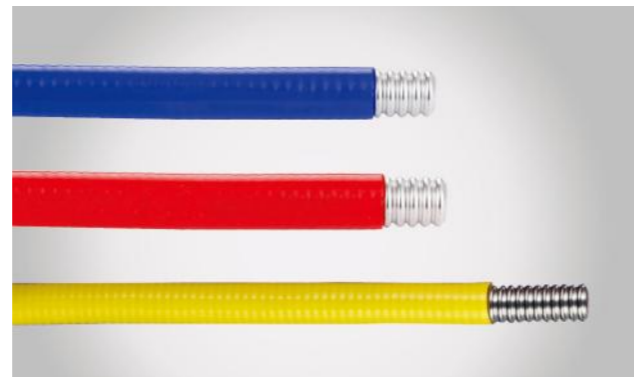


### Material instde

- PEX (Italy Finproject)
- EPDM (Dupont)
- PVC (TEKNOR-APEX)
- SANTOPRENE (TEKNOR-APEX)
- PE (SABIC)
- TPSiV (American Dow Chemical)

## MEMO

## CORRUGATED CSST



## INTELLIGENT TOILET HOSE



## WASHING MACHINE CONNECTOR



## GAS HOSE



## HVAC HOSE



## HEAT PUMP HOSE



UNDERWRITER LABORATORIES INC.



CNAS NATIONAL-LEVEL LABORATORY

JUSTLINK HVAC TECHNOLOGY (THAILAND) CO., LTD.

Add.: G.K. Land Industrial Park, No. 119/22 Moo. 4 Pluakdaeng, Pluakdaeng, Rayong 21140 Thailand

☎ 0086-576-87148850 📠 0086-576-87148815

✉ coo@cnjianglin.com 🌐 www.chinajustlink.com

